

Person Perception

PhD Opportunities



We are looking for talented and enthusiastic students to join our research team in the Person Perception Program at the [CCD](#)

The Research

- We aim to understand the mechanisms (perceptual, cognitive, neural and evolutionary) of person perception and how they relate to other cognitive abilities and social functioning.
- A major focus is on how person perception skills emerge during typical development and in children with the neuro-developmental disorders of autism and developmental prosopagnosia.

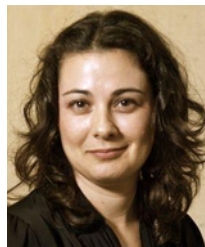
The People

Prof. Gill Rhodes



web: www.ccd.edu.au/people/profile.html?memberID=623

A/Prof. Romina Palermo



web: www.ccd.edu.au/people/profile.html?memberID=64

Dr Linda Jeffery



web: www.ccd.edu.au/people/profile.html?memberID=644

The Place

- Join us in the [Facelab](#) and the [PEPLab](#), located at the [School of Psychology](#) at [The University of Western Australia](#), Perth, AUSTRALIA

Scholarships

Scholarships covering living allowance and tuition fees are available for International & Australian students. The CCD also offers “Top-up scholarships” (up to \$10,000 pa) to supplement the University scholarships.

- **International students** - [Round 1 closes 30 August, 2013](#), **Round 2** closes Jan, 2014
- **Australian Students** - [Applications open 1 August, 2013, close 31 October 2013](#)

Contact

Libby Taylor for more information
email: Libby.Taylor@uwa.edu.au



THE UNIVERSITY OF
WESTERN AUSTRALIA
Achieve International Excellence